



Millbrook Modular Homes

"A Concept to Completion Builder"



*Artist renderings may include additional feature upgrades.*

Designer  
RANCH

2255 Providence Highway | Walpole, MA 02081  
508.734.5884 | fax 508.734.5882 | [www.millbrookhomes.com](http://www.millbrookhomes.com)

# the RANCH

The ranch home is one of the most popular and practical styles in housing today. The ranch offers the convenience of all living space on the same level and can be adapted to both a crawl space or full foundation. The exterior of this home can be smartly dressed with the addition of offsets, porch roofs, decorative dormers and/or door and window packages.



**CHURCHWARD**

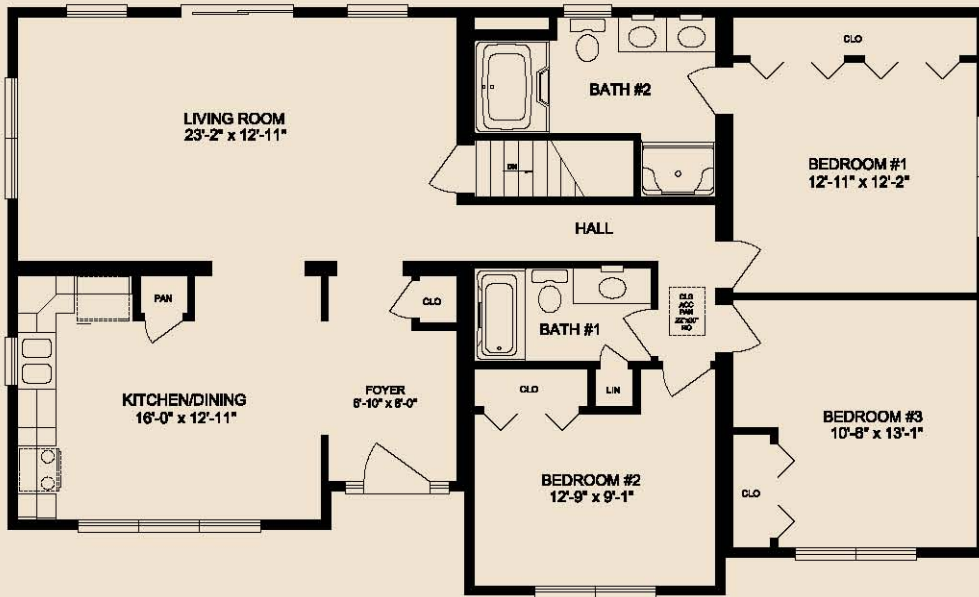
1,614 Sq. Ft. without garage  
2,112 Sq. Ft. with garage



**COLLETTE**

2,519 Sq. Ft. without garage  
3,281 Sq. Ft. with garage

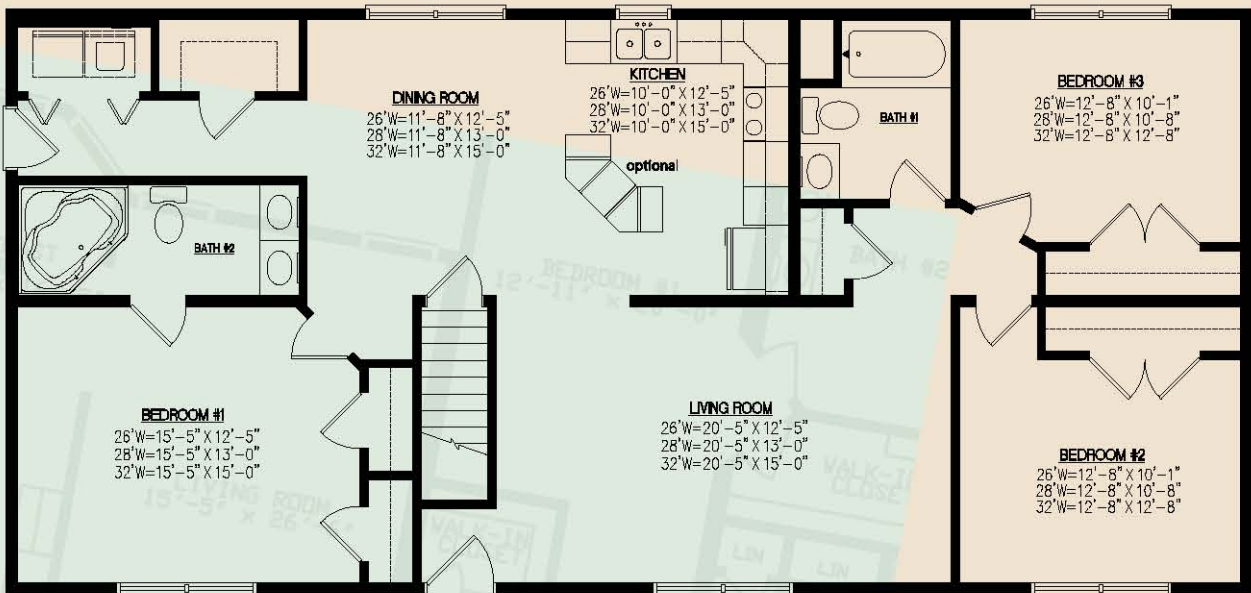




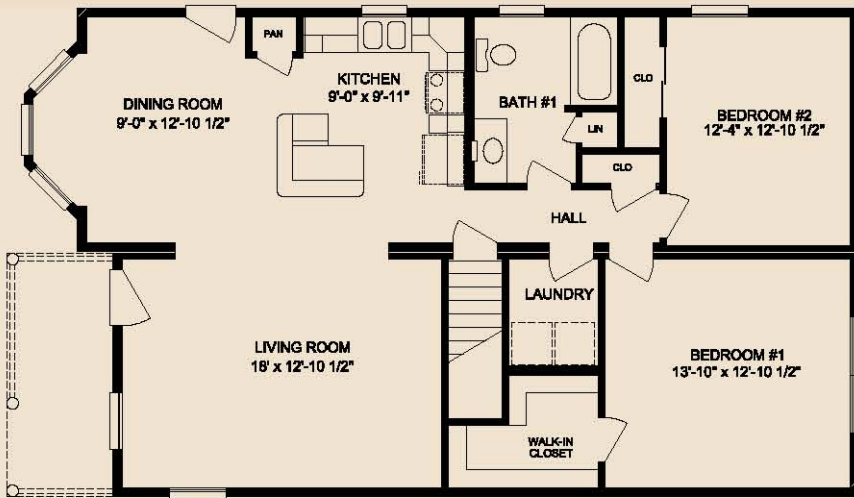
**ELM** | 1,485 Sq. Ft.



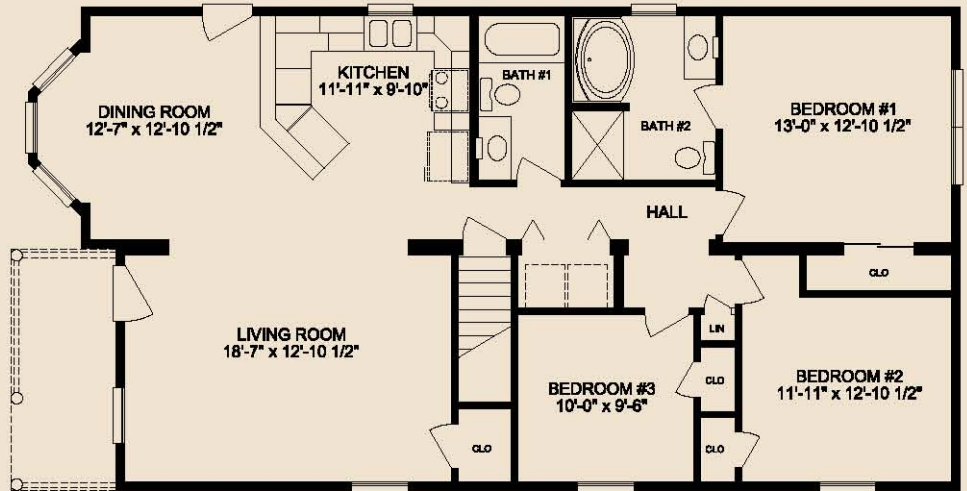
**HAVILAND** | 1,475 Sq. Ft.



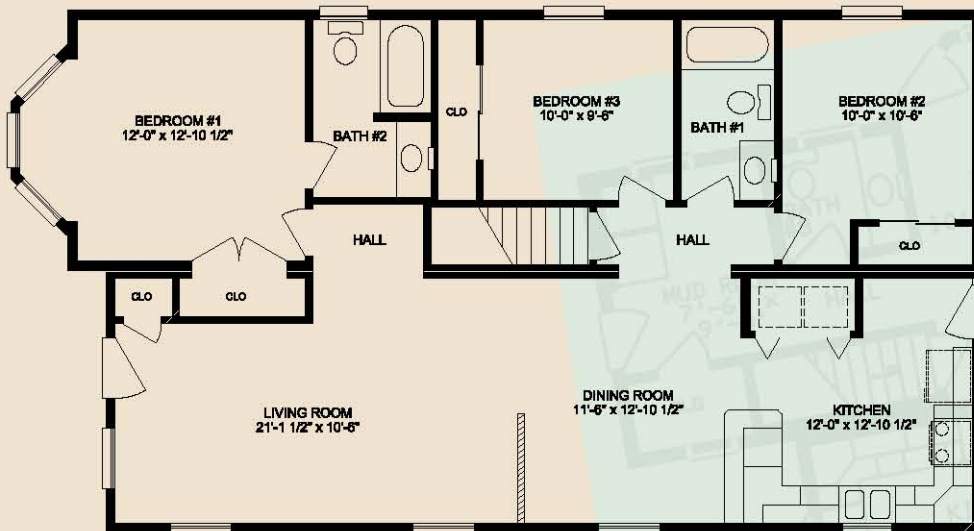
**LAUREL BAY I** | 1,213 Sq. Ft.



**LAUREL BAY II** | 1,378 Sq. Ft.



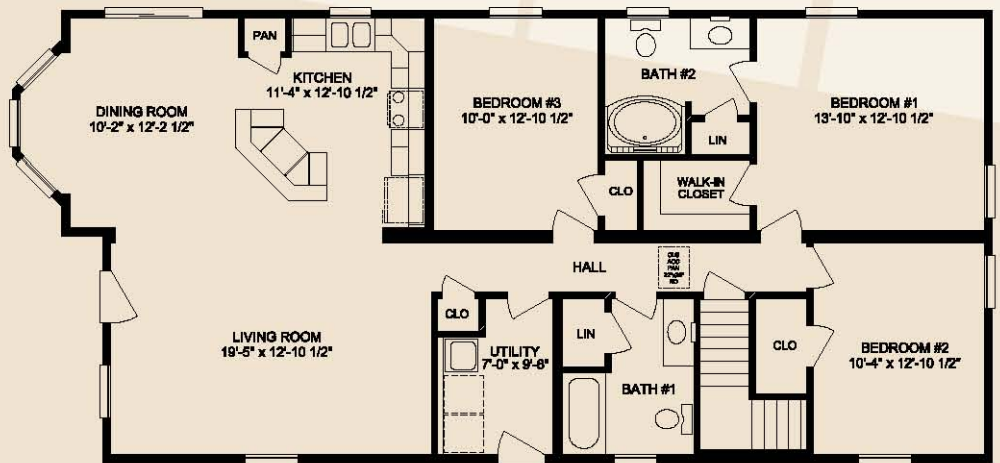
**LAUREL BAY III** | 1,323 Sq. Ft.



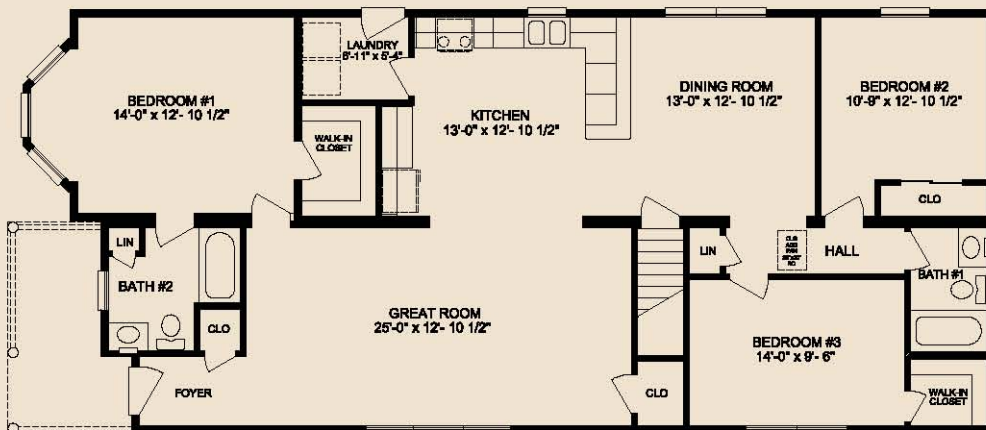
**LAUREL BAY IV** | 1,488 Sq. Ft.



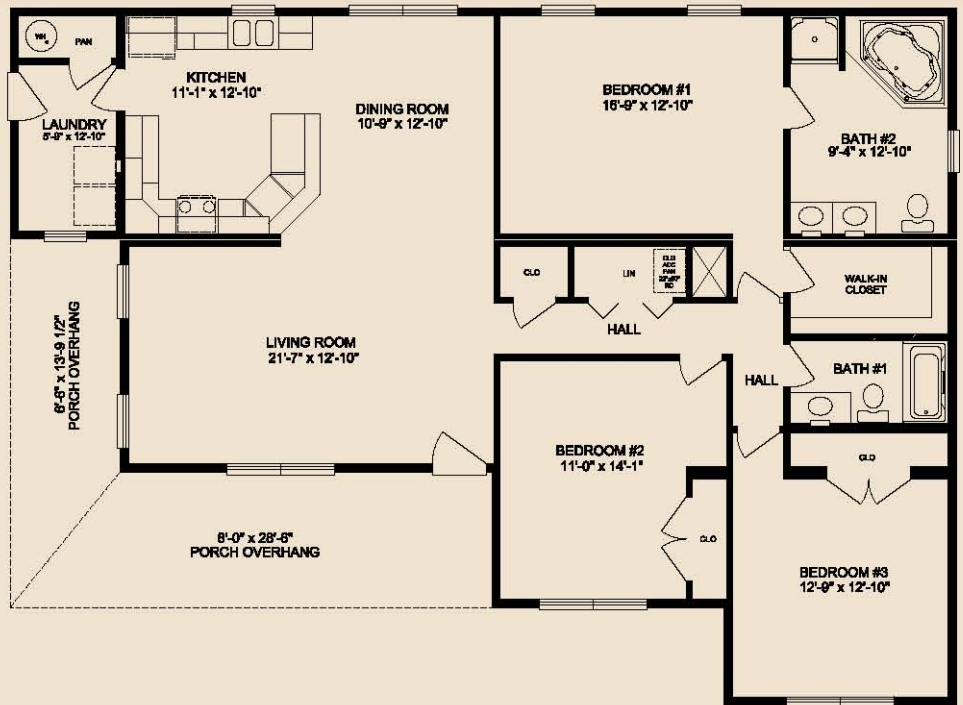
**LAUREL BAY V** | 1,543 Sq. Ft.



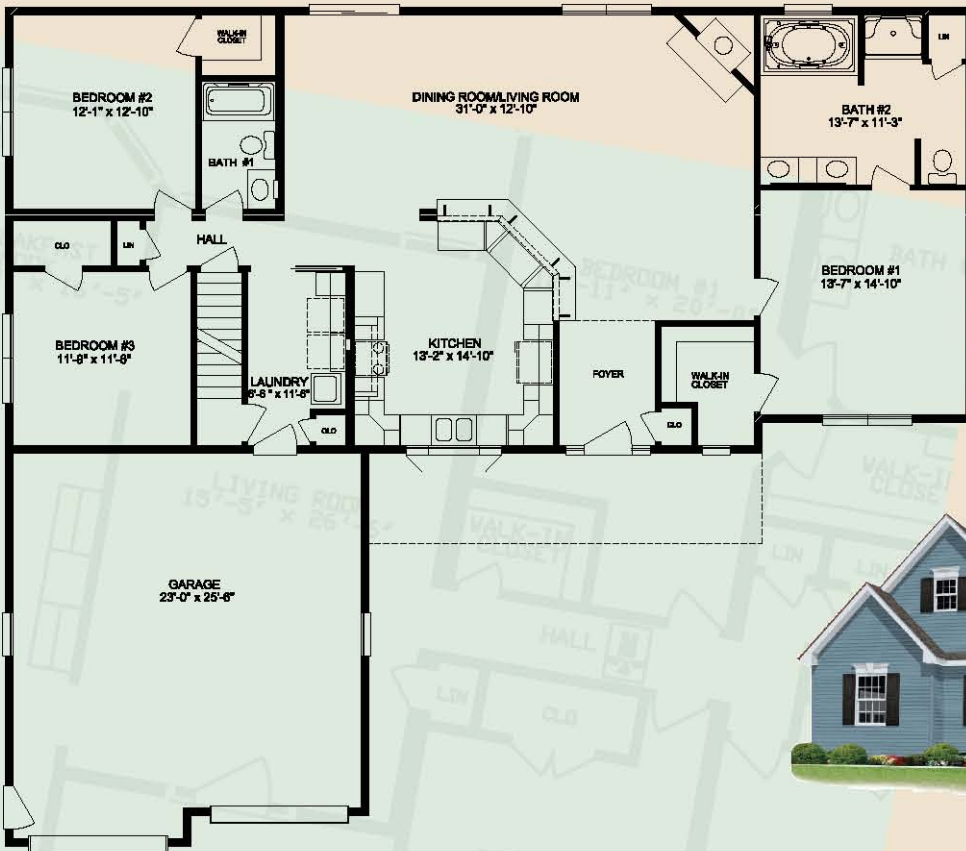
**LAUREL BAY VI** | 1,653 Sq. Ft.



**ASHWOOD** | 1,750 Sq. Ft.

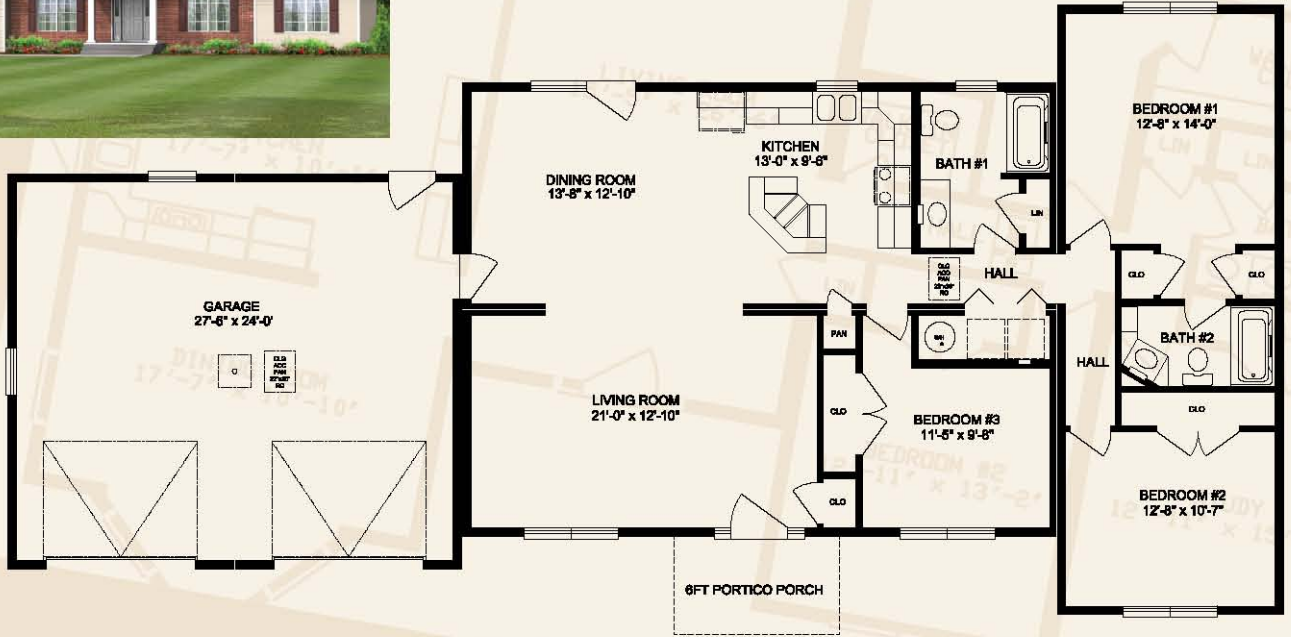


**ROCKVILLE** | 1,860 Sq. Ft. without garage  
2,452 Sq. Ft. with garage

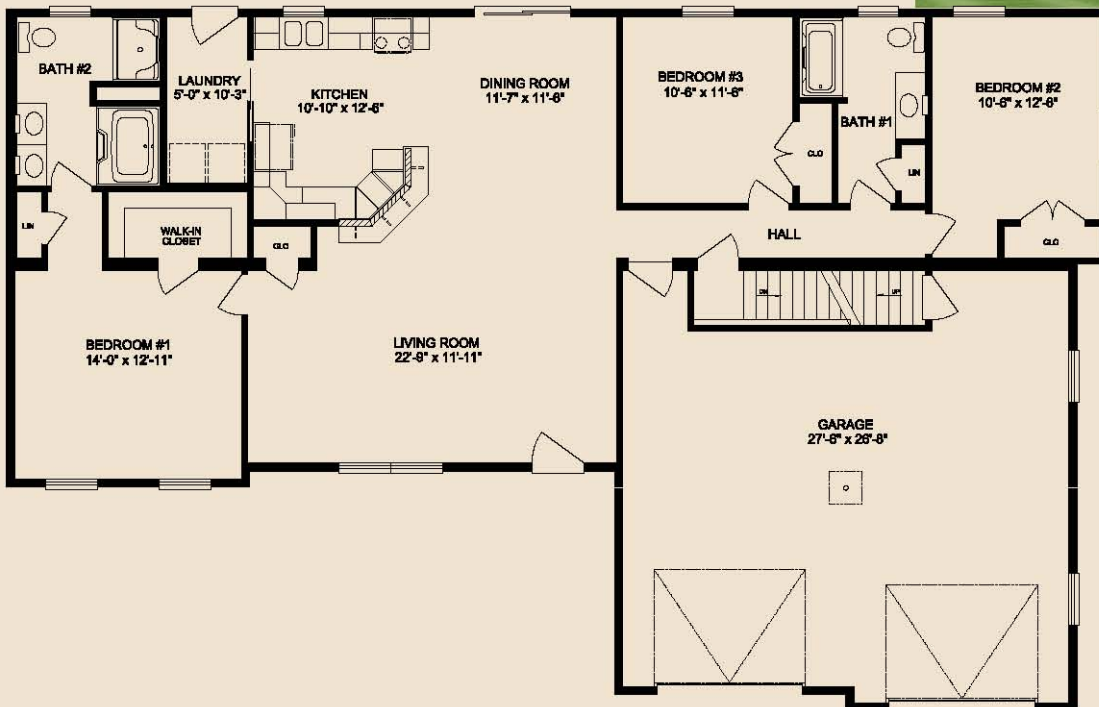




**REDWOOD** | 1,498 Sq. Ft. without garage  
2,158 Sq. Ft. with garage

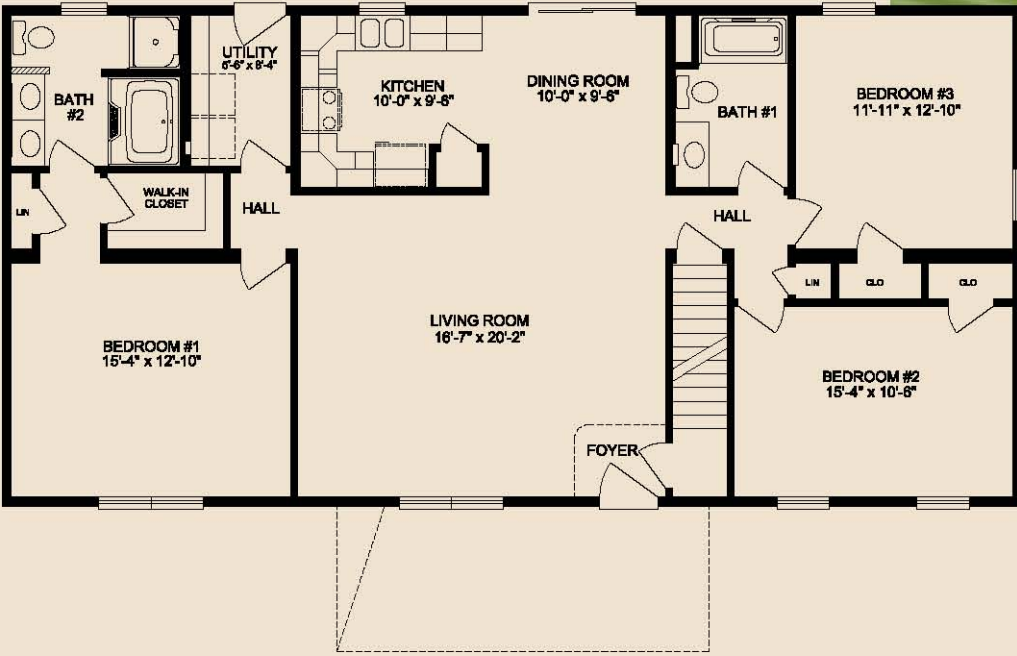


**DOGWOOD** | 1,530 Sq. Ft. without garage  
2,370 Sq. Ft. with garage

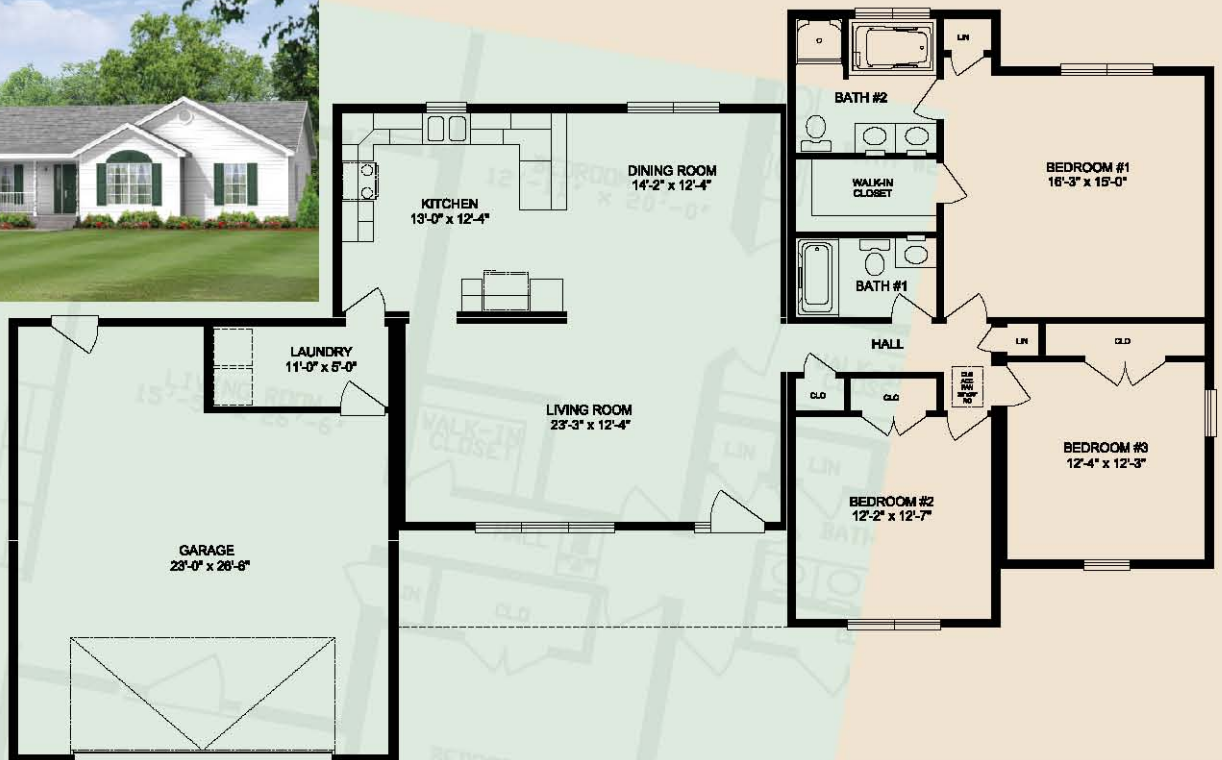




**MEADOWVIEW** | 1,540 Sq. Ft.



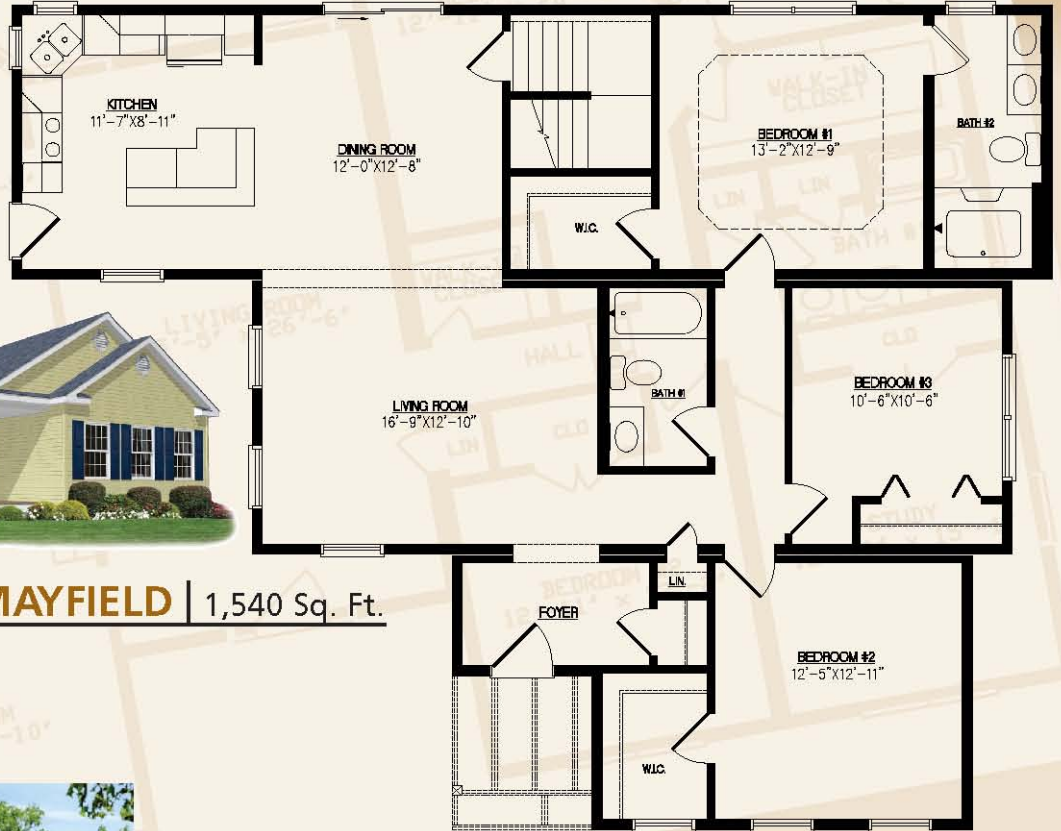
**ROSEWOOD** | 1,595 Sq. Ft. without garage  
2,255 Sq. Ft. with garage







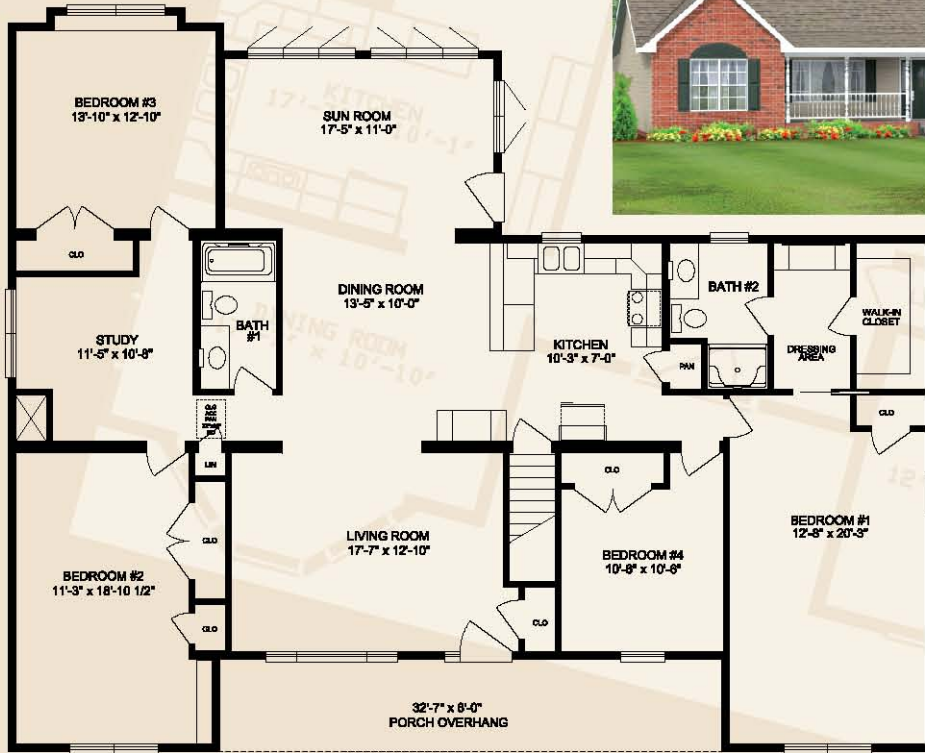
**MAYFIELD** | 1,540 Sq. Ft.



**COTTONWOOD** | 1,745 Sq. Ft. without garage  
2,313 Sq. Ft. with garage

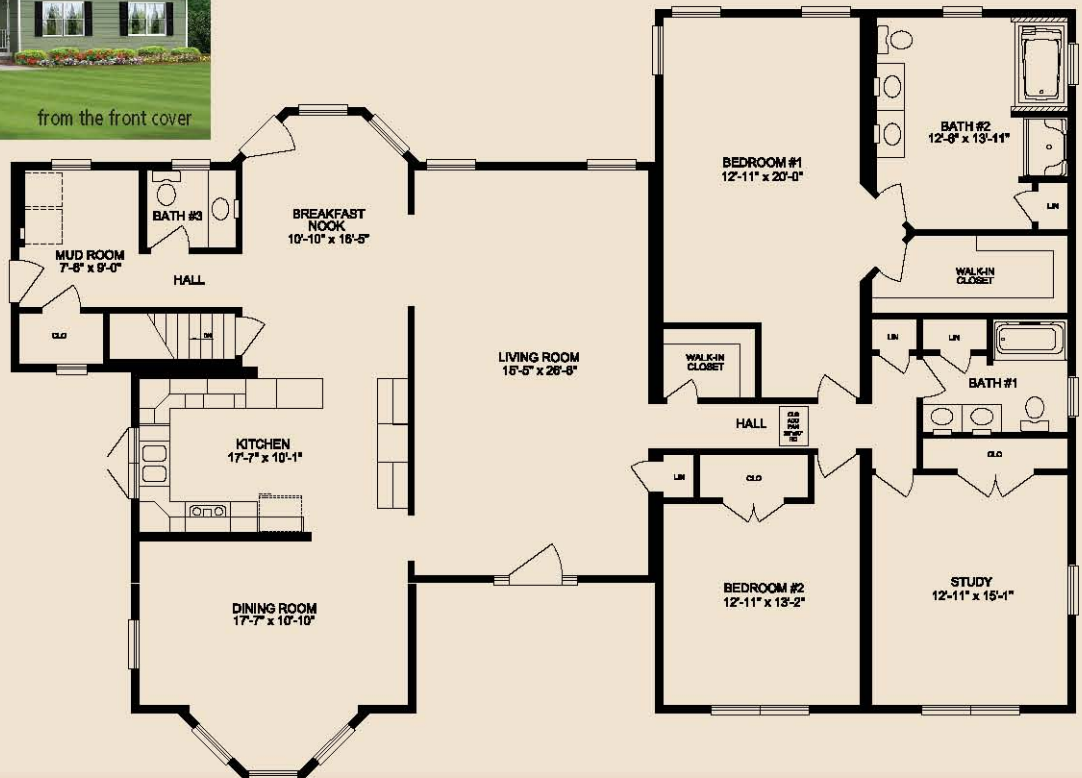


**HEMLOCK** | 2,264 Sq. Ft.

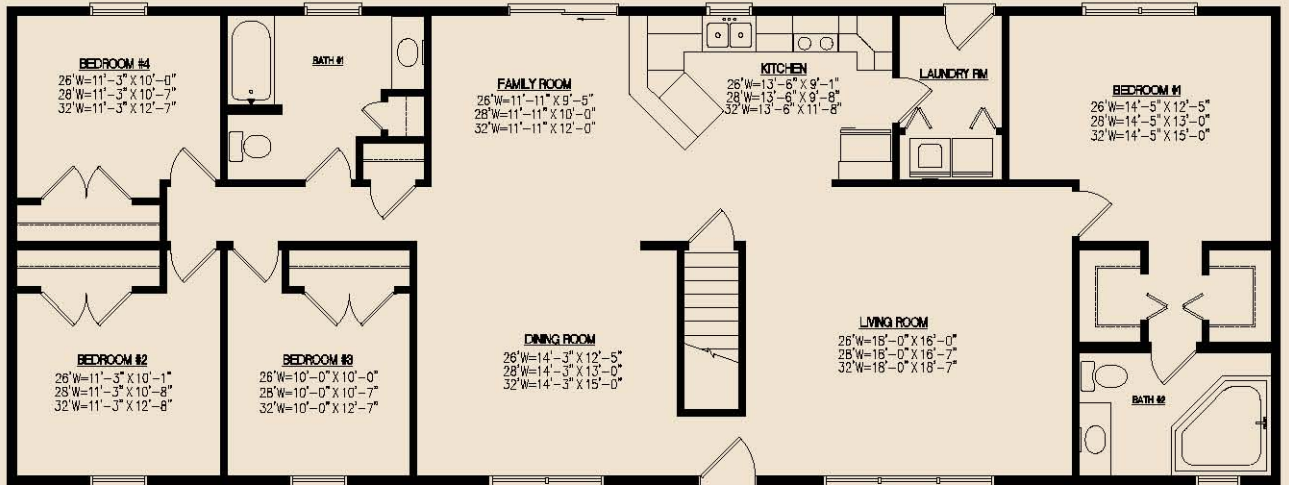


from the front cover

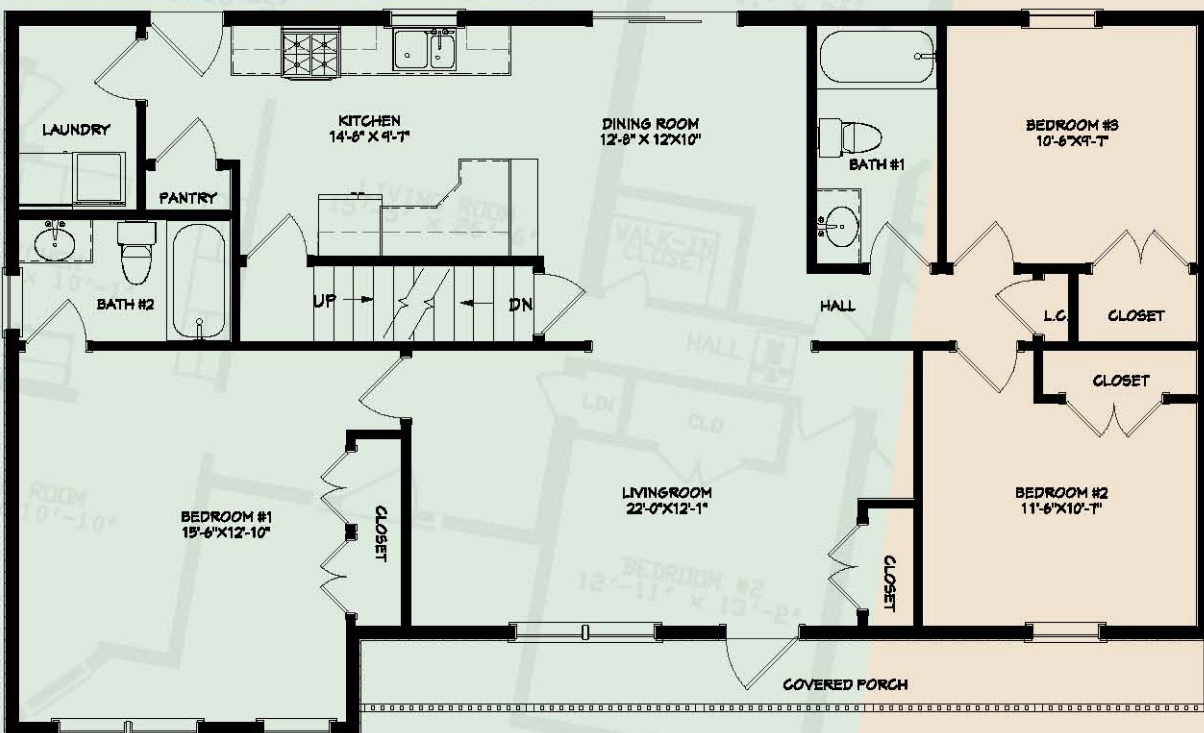
**BEECHWOOD** | 2,600 Sq. Ft.



**KYNDAL** | 1,843 Sq. Ft.



**SHERRY ANN** | 1,500 Sq. Ft.





Millbrook Modular Homes

"A Concept to Completion Builder"

[www.millbrookhomes.com](http://www.millbrookhomes.com)

2255 Providence Highway | Walpole, MA 02081  
508.734.5884 | fax 508.734.5882

Note: Plans can be changed upon request

